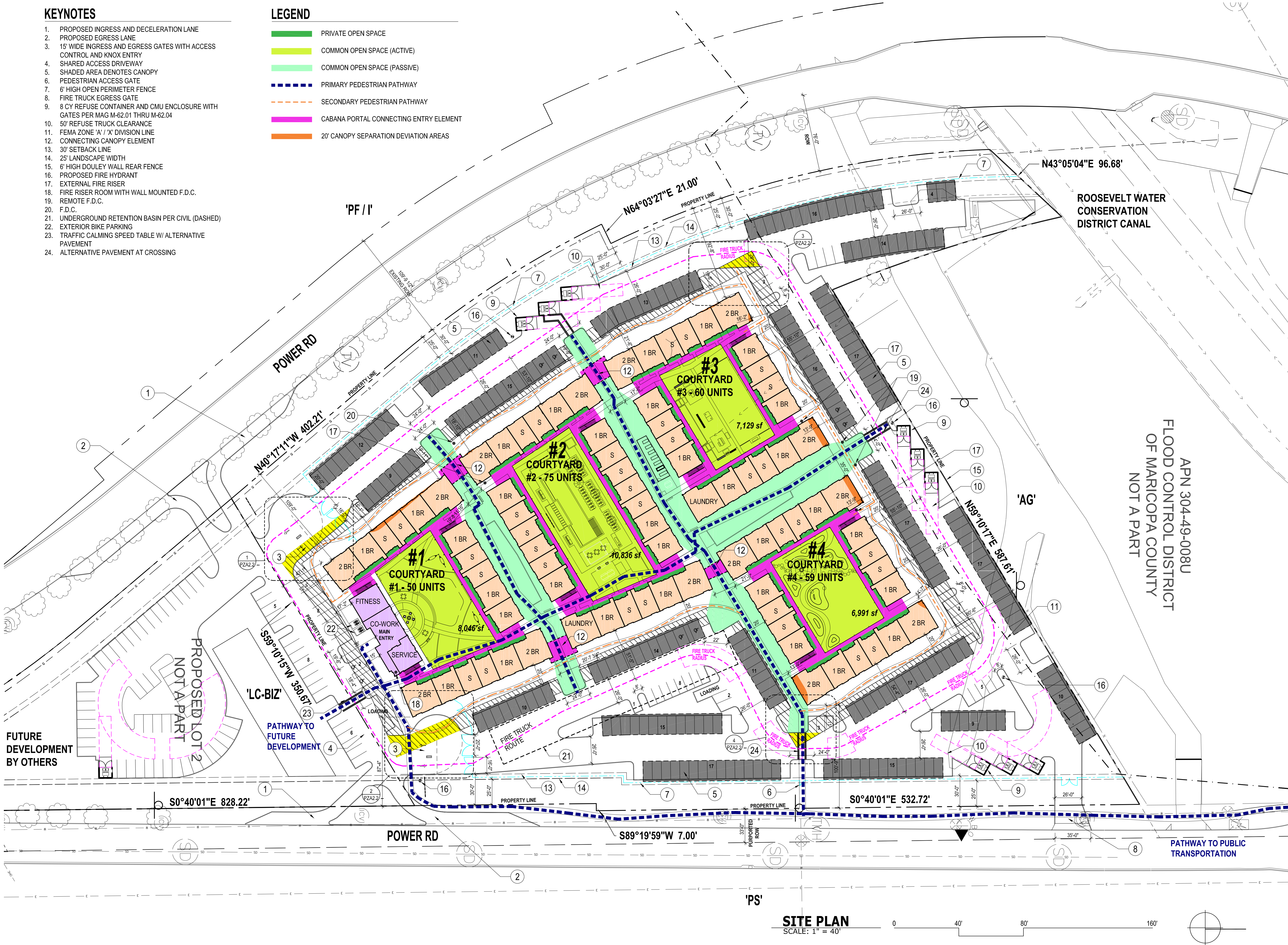


KEYNOTES

- 1. PROPOSED INGRESS AND DECELERATION LANE
- 2. PROPOSED EGRESS LANE
- 3. 15' WIDE INGRESS AND EGRESS GATES WITH ACCESS CONTROL AND KNOX ENTRY
- 4. SHARED ACCESS DRIVEWAY
- 5. SHADED AREA DENOTES CANOPY
- 6. PEDESTRIAN ACCESS GATE
- 7. 6' HIGH OPEN PERIMETER FENCE
- 8. FIRE TRUCK EGRESS GATE
- 9. 8 CY REFUSE CONTAINER AND CMU ENCLOSURE WITH GATES PER MAG M-62.01 THRU M-62.04
- 10. 50' REFUSE TRUCK CLEARANCE
- 11. FEMA ZONE 'A' / 'X' DIVISION LINE
- 12. CONNECTING CANOPY ELEMENT
- 13. 30' SETBACK LINE
- 14. 25' LANDSCAPE WIDTH
- 15. 6' HIGH DOULEY WALL REAR FENCE
- 16. PROPOSED FIRE HYDRANT
- 17. EXTERNAL FIRE RISER
- 18. FIRE RISER ROOM WITH WALL MOUNTED F.D.C.
- 19. REMOTE F.D.C.
- 20. F.D.C.
- 21. UNDERGROUND RETENTION BASIN PER CIVIL (DASHED)
- 22. EXTERIOR BIKE PARKING
- 23. TRAFFIC CALMING SPEED TABLE W/ ALTERNATIVE PAVEMENT
- 24. ALTERNATIVE PAVEMENT AT CROSSING

LEGEND

- PRIVATE OPEN SPACE
- COMMON OPEN SPACE (ACTIVE)
- COMMON OPEN SPACE (PASSIVE)
- PRIMARY PEDESTRIAN PATHWAY
- SECONDARY PEDESTRIAN PATHWAY
- CABANA PORTAL CONNECTING ENTRY ELEMENT
- 20' CANOPY SEPARATION DEVIATION AREAS



WORKSBUREAU  
2524 NORTH 24TH STREET  
PHOENIX ARIZONA 85008 USA  
+1 602 324 6000

Dig Studio  
600 N. 4TH STREET  
PHOENIX ARIZONA 85004  
+1 602 335 4101 | DIGSTUDIO.COM

REVISIONS			DESCRIPTION
NO.	DATE	PZ COMMENTS	
1	6/3/19	-	
-	-	-	
-	-	-	
-	-	-	

CABANA ON POWER RD #PRS19-00076  
GREENLIGHT COMMUNITIES  
MESA, AZ, USA

SITE PLAN

29 APRIL 2019

DRAWN BY: RG CHECKED BY: RG

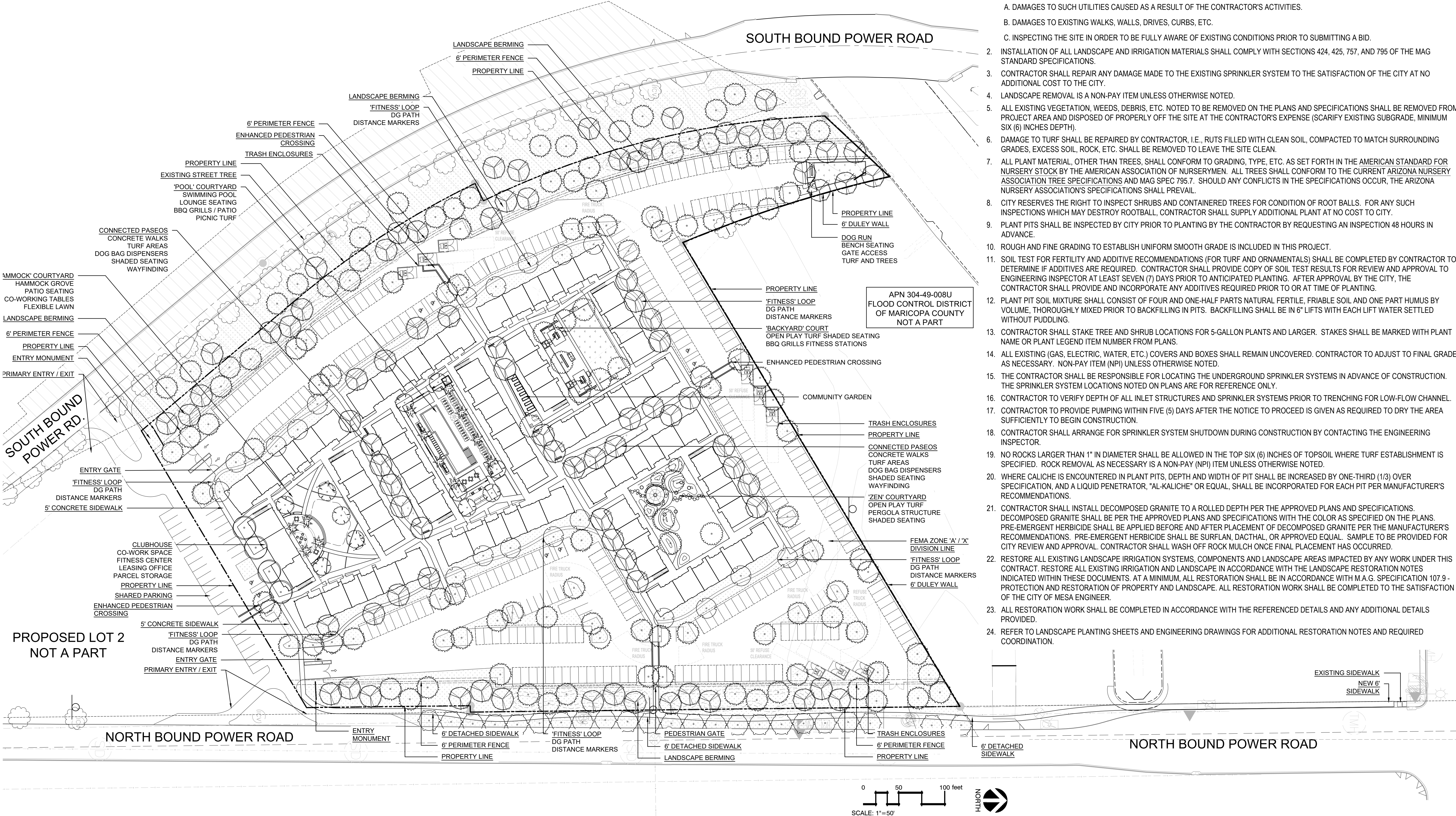
PROJECT #18136

PLANNING & ZONING

PZ-A2



PLANT SCHEDULE					
TREES	25% 36" BOX, 50% 24" BOX	ACCENTS AND SHRUBS (5 GAL)			GROUND COVERS (1 GAL)
	ACACIA ANUERA MULGA		AGAVE GEMINIFLORA CENTURY PLANT		MUHLENBERGIA CAPILLARIS 'REGAL MIST' TM MUHLY
	CERCIDIUM X 'DESERT MUSEUM' THORNLESS PALO VERDE		AGAVE MURPHEYI MURPHEY'S CENTURY PLANT		MUHLENBERGIA RIGENS DEER GRASS
	FRAXINUS VELUTINA 'FAN-TEX' FAN-TEX ASH		DODONAEA VISCOSA HOPSEED BUSH		MYRTUS COMMUNIS 'COMPACTA' DWARF MYRTLE
	OLNEYA TESOTA DESERT IRONWOOD		EUPHORBIA ANTISYPHILITICA CANDELLA EUPHORBIA		PACHYCEREUS SCHOTTII F. MONSTROSUS TOTEM POLE CACTUS
	PARKINSONIA PRAECOX PALO BREA		EUPHORBIA TIRUCALLI 'STICKS ON FIRE' PENCIL TREE		PEDILANTHUS BRACTEATUS SLIPPER
	PROSOPIS GLANDULOSA 'THORNLESS AZT' THORNLESS HONEY MESQUITE		HESPERALOE FUNIFERA GIANT HESPERALOE		SIMMONDSIA CHINENSIS JOJOBA
	WASHINGTONIA ROBUSTA MEXICAN FAN PALM		HESPERALOE PARVIFLORA RED YUCCA		YUCCA PALLIDA TWISTLEAF YUCCA
					GROUND COVERS (1 GAL) EREMOPHILA GLABRA 'MINGENW GOLD' EMU BUSH LANTANA MONTEVIDENSIS 'PURPLE' PURPLE LANTANA LANTANA X 'NEW GOLD' NEW GOLD LANTANA SETCREASEA PALLIDA 'PURPLE HEART' PURPLE HEART SETCREASEA WEDELIA TRILOBATA WEDELIA CYNODON DACTYLON 'MIDIRON' BERMUDA GRASS DECOMPOSED GRANITE 3/4" SCREEN - 2" DEPTH, COLOR TO BE DETERMINE



CITY OF MESA LANDSCAPE REQUIREMENTS

- SOUTH BOUND POWER ROAD R.O.W (TOWN OF GILBERT JURISDICTION)**
- 1 TREE PER 25 FEET OF LINEAL STREET FRONTAGE
  - 50% OF TREES TO BE 24" BOX OR LARGER
  - 3 SHRUBS PER TREE (5-GALLON MINIMUM SIZE)
  - SHRUBS AND GROUNDCOVERS SHALL COVER 25% LANDSCAPE AREA
- STREET THEME TREE (DISTRICT 11)**
- 25% NATIVE MESQUITE
  - 25% SISSOO TREE
- NORTH BOUND POWER ROAD R.O.W (CITY OF MESA JURISDICTION)**
- 1 TREE PER 25 FEET OF LINEAL STREET FRONTAGE
  - 25% OF TREES TO BE 36" BOX
  - 50% OF TREES TO BE 24" BOX
  - 6 SHRUBS PER TREE (5-GALLON MINIMUM SIZE)
  - SHRUBS AND GROUNDCOVERS SHALL COVER 25% LANDSCAPE AREA
- PERIMETER LANDSCAPING (NON-SINGLE RESIDENCE ADJACENT TO NON-SINGLE RESIDENCE)**
- 3 TREES PER 100 LINEAL FEET OF PROPERTY LINE
  - 50% OF TREES TO BE 24" BOX
  - 20 SHRUBS PER 100 LINEAL FEET OF PROPERTY LINE (5-GALLON MINIMUM SIZE)

- PARKING LOT LANDSCAPE**
- 1 TREE PER STANDARD PARKING ISLAND (8'X15')
  - 10% OF TREES TO BE 36" BOX
  - 90% OF TREES TO BE 24" BOX
  - 3 SHRUBS PER TREE (5-GALLON MINIMUM SIZE)
  - ADDITIONAL 1 TREE PER 8 PARKING SPACES
  - 6 SHRUBS PER TREE (5-GALLON MINIMUM SIZE)
- FOUNDATION BASE LANDSCAPE**
- 1 TREE PER 50 LINEAL FEET OF EXTERIOR BUILDING WALL
  - 10% OF TREES TO BE 36" BOX
  - 90% OF TREES TO BE 24" BOX
  - 3 SHRUBS PER TREE (5-GALLON MINIMUM SIZE)

TOTAL TREES PROVIDED

- SOUTH BOUND POWER ROAD R.O.W**
- 840LF OF STREET FRONTAGE
- 34 TREES REQUIRED
- 17 TREES AT 24" BOX
  - 102 SHRUBS REQUIRED (5-GAL.MIN.)
- NORTH BOUND POWER ROAD R.O.W**
- 710 LF STREET FRONTAGE
- 29 TREES REQUIRED
- 8 TREES AT 36" BOX
  - 15 TREES AT 24" BOX
  - 174 SHRUBS REQUIRED (5-GAL.MIN.)
- PERIMETER LANDSCAPING**
- 920 LF OF NORTH PROPERTY LINE
- 28 TREES REQUIRED
- 14 TREES AT 24" BOX
  - 180 SHRUBS REQUIRED (5-GAL.MIN.)
- PARKING LOT LANDSCAPE**
- 58 TREES REQUIRED AT PARKING ISLAND
- 6 TREES AT 36" BOX
  - 52 TREES AT 24" BOX
  - 174 SHRUBS REQUIRED (5-GAL.MIN.)
- ADDITIONAL 45 TREES REQUIRED PARKING LOT**
- 5 TREES AT 36" BOX
- 40 TREES AT 24" BOX
  - 270 SHRUBS REQUIRED
- FOUNDATION BASE LANDSCAPE**
- 980LF OF EXTERIOR BUILDING WALL
- 20 TREES REQUIRED
- 2 TREES AT 36" BOX
  - 18 TREES AT 24" BOX
  - 60 SHRUBS REQUIRED (5-GAL.MIN.)

LANDSCAPE GENERAL NOTES

- (REVISED 02-15-18) (2018 VERSION)
- LANDSCAPE CONTRACTOR SHALL CONFIRM LOCATION OF ALL UNDERGROUND UTILITIES PRIOR TO ANY EXCAVATION AND SHALL BE RESPONSIBLE FOR THE FOLLOWING:
    - A. DAMAGES TO SUCH UTILITIES CAUSED AS A RESULT OF THE CONTRACTOR'S ACTIVITIES.
    - B. DAMAGES TO EXISTING WALKS, WALLS, DRIVES, CURBS, ETC.
    - C. INSPECTING THE SITE IN ORDER TO BE FULLY AWARE OF EXISTING CONDITIONS PRIOR TO SUBMITTING A BID.
  - INSTALLATION OF ALL LANDSCAPE AND IRRIGATION MATERIALS SHALL COMPLY WITH SECTIONS 424, 425, 757, AND 795 OF THE MAG STANDARD SPECIFICATIONS.
  - CONTRACTOR SHALL REPAIR ANY DAMAGE MADE TO THE EXISTING SPRINKLER SYSTEM TO THE SATISFACTION OF THE CITY AT NO ADDITIONAL COST TO THE CITY.
  - LANDSCAPE REMOVAL IS A NON-PAY ITEM UNLESS OTHERWISE NOTED.
  - ALL EXISTING VEGETATION, WEEDS, DEBRIS, ETC. NOTED TO BE REMOVED ON THE PLANS AND SPECIFICATIONS SHALL BE REMOVED FROM PROJECT AREA AND DISPOSED OF PROPERLY OFF THE SITE AT THE CONTRACTOR'S EXPENSE (SCARIFY EXISTING SUBGRADE, MINIMUM SIX (6) INCHES DEPTH).
  - DAMAGE TO TURF SHALL BE REPAIRED BY CONTRACTOR, I.E., RUTS FILLED WITH CLEAN SOIL, COMPACTED TO MATCH SURROUNDING GRADES, EXCESS SOIL, ROCK, ETC. SHALL BE REMOVED TO LEAVE THE SITE CLEAN.
  - ALL PLANT MATERIAL, OTHER THAN TREES, SHALL CONFORM TO GRADING, TYPE, ETC. AS SET FORTH IN THE AMERICAN STANDARD FOR NURSERY STOCK BY THE AMERICAN ASSOCIATION OF NURSERYMEN. ALL TREES SHALL CONFORM TO THE CURRENT ARIZONA NURSERY ASSOCIATION TREE SPECIFICATIONS AND MAG SPEC 795.7. SHOULD ANY CONFLICTS IN THE SPECIFICATIONS OCCUR, THE ARIZONA NURSERY ASSOCIATION'S SPECIFICATIONS SHALL PREVAIL.
  - CITY RESERVES THE RIGHT TO INSPECT SHRUBS AND CONTAINERED TREES FOR CONDITION OF ROOT BALLS. FOR ANY SUCH INSPECTIONS WHICH MAY DESTROY ROOTBALL, CONTRACTOR SHALL SUPPLY ADDITIONAL PLANT AT NO COST TO CITY.
  - PLANT PITS SHALL BE INSPECTED BY CITY PRIOR TO PLANTING BY THE CONTRACTOR BY REQUESTING AN INSPECTION 48 HOURS IN ADVANCE.
  - ROUGH AND FINE GRADING TO ESTABLISH UNIFORM SMOOTH GRADE IS INCLUDED IN THIS PROJECT.
  - SOIL TEST FOR FERTILITY AND ADDITIVE RECOMMENDATIONS (FOR TURF AND ORNAMENTALS) SHALL BE COMPLETED BY CONTRACTOR TO DETERMINE IF ADDITIVES ARE REQUIRED. CONTRACTOR SHALL PROVIDE COPY OF SOIL TEST RESULTS FOR REVIEW AND APPROVAL TO ENGINEERING INSPECTOR AT LEAST SEVEN (7) DAYS PRIOR TO ANTICIPATED PLANTING. AFTER APPROVAL BY THE CITY, THE CONTRACTOR SHALL PROVIDE AND INCORPORATE ANY ADDITIVES REQUIRED PRIOR TO OR AT TIME OF PLANTING.
  - PLANT PIT SOIL MIXTURE SHALL CONSIST OF FOUR AND ONE-HALF PARTS NATURAL FERTILE, FRIABLE SOIL AND ONE PART HUMUS BY VOLUME, THOROUGHLY MIXED PRIOR TO BACKFILLING IN PITS. BACKFILLING SHALL BE IN 6" LIFTS WITH EACH LIFT WATER SETTLED WITHOUT PUDDLING.
  - CONTRACTOR SHALL STAKE TREE AND SHRUB LOCATIONS FOR 5-GALLON PLANTS AND LARGER. STAKES SHALL BE MARKED WITH PLANT NAME OR PLANT LEGEND ITEM NUMBER FROM PLANS.
  - ALL EXISTING (GAS, ELECTRIC, WATER, ETC.) COVERS AND BOXES SHALL REMAIN UNCOVERED. CONTRACTOR TO ADJUST TO FINAL GRADE AS NECESSARY. NON-PAY ITEM (NPI) UNLESS OTHERWISE NOTED.
  - THE CONTRACTOR SHALL BE RESPONSIBLE FOR LOCATING THE UNDERGROUND SPRINKLER SYSTEMS IN ADVANCE OF CONSTRUCTION. THE SPRINKLER SYSTEM LOCATIONS NOTED ON PLANS ARE FOR REFERENCE ONLY.
  - CONTRACTOR TO VERIFY DEPTH OF ALL INLET STRUCTURES AND SPRINKLER SYSTEMS PRIOR TO TRENCHING FOR LOW-FLOW CHANNEL.
  - CONTRACTOR TO PROVIDE PUMPING WITHIN FIVE (5) DAYS AFTER THE NOTICE TO PROCEED IS GIVEN AS REQUIRED TO DRY THE AREA SUFFICIENTLY TO BEGIN CONSTRUCTION.
  - CONTRACTOR SHALL ARRANGE FOR SPRINKLER SYSTEM SHUTDOWN DURING CONSTRUCTION BY CONTACTING THE ENGINEERING INSPECTOR.
  - NO ROCKS LARGER THAN 1" IN DIAMETER SHALL BE ALLOWED IN THE TOP SIX (6) INCHES OF TOPSOIL WHERE TURF ESTABLISHMENT IS SPECIFIED. ROCK REMOVAL AS NECESSARY IS A NON-PAY (NPI) ITEM UNLESS OTHERWISE NOTED.
  - WHERE CALICHE IS ENCOUNTERED IN PLANT PITS, DEPTH AND WIDTH OF PIT SHALL BE INCREASED BY ONE-THIRD (1/3) OVER SPECIFICATION, AND A LIQUID PENETRATOR, "AL-KALICHE" OR EQUAL, SHALL BE INCORPORATED FOR EACH PIT PER MANUFACTURER'S RECOMMENDATIONS.
  - CONTRACTOR SHALL INSTALL DECOMPOSED GRANITE TO A ROLLED DEPTH PER THE APPROVED PLANS AND SPECIFICATIONS. DECOMPOSED GRANITE SHALL BE PER THE APPROVED PLANS AND SPECIFICATIONS WITH THE COLOR AS SPECIFIED ON THE PLANS. PRE-EMERGENT HERBICIDE SHALL BE APPLIED BEFORE AND AFTER PLACEMENT OF DECOMPOSED GRANITE PER THE MANUFACTURER'S RECOMMENDATIONS. PRE-EMERGENT HERBICIDE SHALL BE SURFLAN, DACTHAL, OR APPROVED EQUAL. SAMPLE TO BE PROVIDED FOR CITY REVIEW AND APPROVAL. CONTRACTOR SHALL WASH OFF ROCK MULCH ONCE FINAL PLACEMENT HAS OCCURRED.
  - RESTORE ALL EXISTING LANDSCAPE IRRIGATION SYSTEMS, COMPONENTS AND LANDSCAPE AREAS IMPACTED BY ANY WORK UNDER THIS CONTRACT. RESTORE ALL EXISTING IRRIGATION AND LANDSCAPE IN ACCORDANCE WITH THE LANDSCAPE RESTORATION NOTES INDICATED WITHIN THESE DOCUMENTS. AT A MINIMUM, ALL RESTORATION SHALL BE IN ACCORDANCE WITH M.A.G. SPECIFICATION 107.9 - PROTECTION AND RESTORATION OF PROPERTY AND LANDSCAPE. ALL RESTORATION WORK SHALL BE COMPLETED TO THE SATISFACTION OF THE CITY OF MESA ENGINEER.
  - ALL RESTORATION WORK SHALL BE COMPLETED IN ACCORDANCE WITH THE REFERENCED DETAILS AND ANY ADDITIONAL DETAILS PROVIDED.
  - REFER TO LANDSCAPE PLANTING SHEETS AND ENGINEERING DRAWINGS FOR ADDITIONAL RESTORATION NOTES AND REQUIRED COORDINATION.

WORKSBUREAU  
2524 NORTH 24TH STREET  
PHOENIX ARIZONA 85008 USA  
+1 602 324 6000

600 N. 4TH STREET  
PHOENIX ARIZONA  
85004-1001  
+1 602 324 6000

**Dig Studio**

REVISIONS		DESCRIPTION	
NO.	DATE		

CABANA ON POWER RD #PRS19-00076  
GREENLIGHT COMMUNITIES  
MESA, AZ, USA

CONCEPTUAL LANDSCAPE PLAN

28 MAY 2019

DRAWN BY: JWB/BS CHECKED BY: BS

PROJECT # 18136

DESIGN REVIEW

**DR L1**



28 MAY 2019

DRAWN BY: RG    CHECKED BY: RG

PROJECT # 18136

DESIGN REVIEW

DR-A9

CABANA ON POWER RD #PRS19-00076

GREENLIGHT COMMUNITIES  
MESA, AZ, USA

SITE LIGHTING CUT SHEETS

REVISIONS

NO.	DATE	DESCRIPTION
1		
2		
3		
4		
5		

WORKSBUREAU  
2524 NORTH 24TH STREET  
PHOENIX, ARIZONA 85008 USA  
+1 602 324 6000

600 N. 4TH STREET  
PHOENIX, ARIZONA  
85004-1001  
DESIGN@DUBSTUDIO.COM

Dig Studio

**DESCRIPTION**  
The Halo Surface LED Downlight (SLD) incorporates WaveStream™ technology to create an ultra-low profile surface mounting luminaire with the performance and look of a traditional downlight. SLDs 1200 UNV series is designed for installation in many 4" x 2-1/8" deep square junction boxes. Accessory mounting allows retrofit in 6" and 6" IC and Non-IC recessed housings.\* Suitable for residential or commercial installations. Ideal for closets, storage areas, alcoves and basements. Compliant with NFPA 70, NEC Section 410.16 (A)(3) and 410.16 (C)(5).

**SPECIFICATION FEATURES**

- CONSTRUCTION**
  - Die cast aluminum trim ring, and die formed aluminum frame
- OPTICS**
  - WaveStream™ technology provides uniform luminance from a low profile flat lens
  - AccuBeam™ optics provide directional control for the "cone-of-light" beam distribution of a traditional downlight.
  - Precision molded lens features high transmission polymer with UV stabilized protecting film
- DESIGNER TRIMS**
  - Accessories (sold separately) SLD designer trims are accessory rings that attach to the SLD for a permanent finish.\* Refer to SLD accessories specification sheet for details.
  - White (Paintable)
  - Satin Nickel
  - Tuscan Bronze
- SLD accessory trims** attach with permanent adhesion and are not interchangeable after installation.
- ELECTRICAL JUNCTION BOX MOUNTING**
  - SLD may be used in compatible electrical junction boxes in direct contact with insulation including spray foam insulation
  - Suitable for installation in many 4" x 2-1/8" deep square electrical junction boxes
  - Driver consumes 3 cubic inches of junction box
  - Compatible with other junction boxes with accessory SLDEXXT extension spacer ring.
  - Installer must ensure compatibility of fit, wiring and proper mounting in the electrical junction box.
  - This includes all applicable national and local electrical and building codes.
- PROPRIETARY SLOT-N-LOCK** quick installation system for junction box installation
- TRADEKIT** with Slot-N-Lock mounting tabs included
- OPTIONAL - RECESSED HOUSING**
  - Accessory SLDEXXT required for mounting in 6" and 6" enclosed recessed housings
  - May be installed in IC recessed housings in direct contact with insulation
  - Note: Not for use in recessed housings in direct contact with spray foam insulation. Refer to NFPA 70, NEC Section 410.16 (A)(3) and 410.16 (C)(5).
- THE SLDs** may be used with any 5 or 6 inch diameter recessed housing constructed of steel or aluminum with an internal volume that exceeds 107.8 in³.
- LED**
  - Linear LED arrays are integrated in trim perimeter
  - Color Temperature: 2700K, 3000K, 3500K, 4000K
  - CRI options: 80 and 90
  - 90 CRI can be used for California Title 24 compliance/certified to Title 20
  - 90 CRI can be used to comply with California Title 24 Non-Residential Lighting Controls as a LED luminaire.
- WARRANTY**  
Eaton provides a five year limited warranty on the SLD LED
- LED CHROMATICITY**
  - A light chromaticity specification ensures LED color uniformity, sustainable Color Rendering Index (CRI) and Correlated Color Temperature (CCT) over the useful life of the LED
  - LED chromaticity of 3 SDCM exceeds ENERGY STAR® color standards per ANSI.



Refer to ENERGY STAR® Certified Product List.



Refer to ENERGY STAR® Qualified Product List. On line lists comply with California Title 24 energy efficiency requirements. Refer to California Appliance Efficiency Database under A9E. Refer LED luminaire CCT of 4000K or less.

EATON  
Powering Business Worldwide

**HALO**

Catalog #	Type
Project	D
Comments	Date
Prepared by	



**SLD6 1200 UNV Series Universal Voltage SLD6128xWHUNVJB**  
2700K, 3000K, 3500K, and 4000K  
80CRI  
**SLD6128xWHUNVJB**  
30CRI  
2700K, 3000K, 3500K, and 4000K  
**6" Surface LED Downlight**  
**High Lumen 1200 Series Universal Voltage 120V-277V**

Suitable for ceiling or wall electrical junction boxes

ENERGY DATA	80 CRI	90 CRI
Lumens (400K models)	1215	1000
Input Voltage	120V-277V	120V-277V
Frequency	50/60 Hz	50/60 Hz
Input Current	0.12 A	0.12 A
Input Power	14.8 W	14.8 W
Efficiency (400K models)	82 lm/W	68 lm/W
THD	≤ 20%	
Power Factor	≥ 0.90	
Temperature	-30 ~ +40°C	
Sound Rating	Class A	

**NOMENCLATURE**  
**SLD612820 WH UNV JB**  
612 = 6" SLD 1200 Series  
8 = 80 CRI  
WH = Warm White  
**UNV** = Universal Voltage  
**JB** = Junction Box Kit only

TD518030EN  
1/13/2018

**McGraw-Edison**

Catalog #	Type
Project	88
Comments	Date
Prepared by	



**GWC GALLEON WALL**  
1-2 Light Squares  
Solid State LED  
WALL MOUNT LUMINAIRE

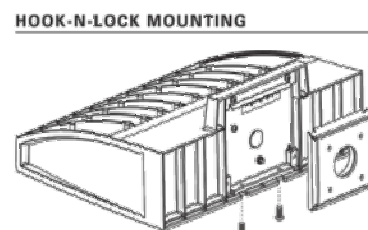
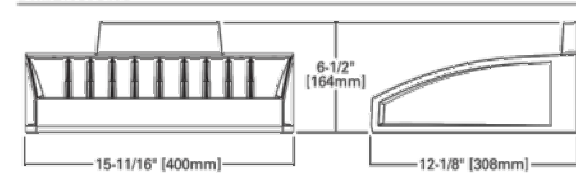
**DESCRIPTION**

The Galleon™ Wall LED luminaire's appearance is complementary with the Galleon area and site luminaire bringing a modern architectural style to lighting applications. Flexible mounting options accommodate wall surfaces in both an upward and downward configuration. The Galleon family of LED products deliver exceptional performance with patented, high-efficiency AccuLED Optics™, providing uniform and energy conscious lighting for parking lots, building and security lighting applications.

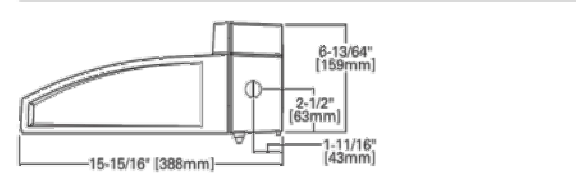
**SPECIFICATION FEATURES**

- Construction**  
Driver enclosures thermally isolated from optics for optimal thermal performance. Heavy wall aluminum housing die-cast with integral external heat sink to provide superior structural rigidity and an IP66 rated housing. Overall construction passes a 1.5G vibration test to ensure mechanical integrity. UPLIGHTING: Specify with the UPL option for inverted mount upright housing with additional protections to maintain IP rating.
- Optics**  
Choice of thirteen patented, high-efficiency AccuLED Optics. The optics are precisely designed to shape the distribution maximizing efficiency and application spacing. AccuLED Optics create consistent distributions with the scalability to meet customized application requirements. Offered standard in 4000K (4- 275K) CCT and minimum 70 CRI. Optional 3000K, 5000K and 6000K CCT. Greater than 90% lumen maintenance expected at 60,000 hours. Available in standard 1A drive current and optional 600mA, 800mA, and 600mA drive currents.
- Electrical**  
LED drivers are mounted for ease of maintenance. 120-277V 50/60Hz, 347V or 480V 50Hz operation. 480V is compatible for use with 480V Wye systems only. Drivers are provided standard with 0-10V dimming. An optional Eaton proprietary surge protection module is available and designed to withstand 10kV of transient line surge. The Galleon Wall LED luminaire is suitable for operation in -40°C to 40°C ambient environments. For applications with ambient temperatures exceeding 40°C, specify the HA (High Ambient) option. Emergency egress options for -20°C ambient environments and occupancy sensor available.
- Finish**  
Housing finished in super durable TGIC polyester powder coat paint. 2.5 mil nominal thickness for superior protection against fade and wear. Standard colors include black, bronze, grey, white, dark platinum and graphite metallic. RAL and custom color matches available. Consult the McGraw-Edison Architectural Colors brochure for the complete selection.
- Warranty**  
Five-year warranty.

**DIMENSIONS**



**BATTERY BACKUP AND THRU-BRANCH BACK BOX**



EATON  
Powering Business Worldwide

TD514017EN  
March 14, 2018 2:09 PM

\*www.designlights.org

**McGraw-Edison**

Catalog #	Type
Project	SD, SE, SF, SH
Comments	Date
Prepared by	

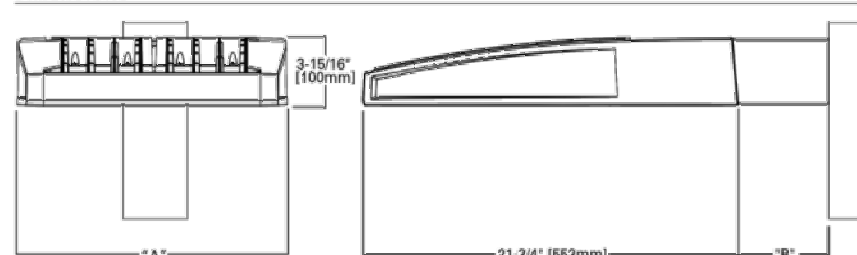
**DESCRIPTION**

The Galleon™ LED luminaire delivers exceptional performance in a highly scalable, low-profile design. Patented, high-efficiency AccuLED Optics™ system provides uniform and energy conscious illumination to walkways, parking lots, roadways, building areas and security lighting applications. IP66 rated and ULcUL Listed for wet locations.

**SPECIFICATION FEATURES**

- Construction**  
Extruded aluminum driver enclosure thermally isolated from Light Squares for optimal thermal performance. Heavy-wall, die-cast aluminum and caps enclose housing and die-cast aluminum heat sinks. A unique, patent pending interlocking housing and heat sink provides scalability with superior structural rigidity. 3G vibration tested and rated. Optional tool-less hardware available for ease of entry into electrical chamber. Housing is IP66 rated.
- Optics**  
Patented, high-efficiency injection-molded AccuLED Optics technology. Optics are precisely designed to shape the distribution maximizing efficiency and application spacing. AccuLED Optics create consistent distributions with the scalability to meet customized application requirements. Offered standard in 4000K (4- 275K) CCT 70 CRI. Optional 3000K, 5000K and 6000K CCT.
- Arm mounting requirement table.**  
Round pole adapter included. For wall mounting, specify wall mount bracket option. QUICK MOUNT ARM Adapter is bolted directly to the pole. Quick mount arm slide into place on the adapter and is secured via two screws, facilitating quick and easy installation. The versatile, patent pending, quick mount arm accommodates multiple drill patterns ranging from 1-1/2" to 4-7/8". Removal of the drive on the quick mount arm enables wiring of the fixture without having to access the driver compartment. A knock-out enables round pole mounting.
- Finish**  
Housing finished in super durable TGIC polyester powder coat paint, 2.5 mil nominal thickness for superior protection against fade and wear. Heat sink is powder coated black. Standard housing colors include black, bronze, grey, white, dark platinum and graphite metallic. RAL and custom color matches available.
- Warranty**  
Five-year warranty.

**DIMENSIONS**



**DIMENSION DATA**

Number of Light Squares	"B" Width	"B" Standard Arm Length	"B" Optional Arm Length	Weight with Arm (lbs.)	EPA with Arm (F.L.)
1-4	15-1/2" (394mm)	7" (178mm)	10" (254mm)	33	0.98
5-6	21-5/8" (549mm)	7" (178mm)	10" (254mm)	44	1.00
7-8	27-5/8" (702mm)	7" (178mm)	10" (254mm)	54	1.07
9-10	33-3/4" (857mm)	7" (178mm)	10" (254mm)	63	1.12

NOTES: 1. Optional arm length to be used when mounting two fixtures at 90° on a single pole. 2. EPA calculated with optional arm length.

EATON  
Powering Business Worldwide

\*www.designlights.org

TD500030EN  
November 30, 2018 2:24 PM

**Metalux**

Catalog #	Type
Project	83
Comments	Date
Prepared by	

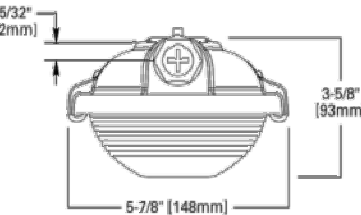
**DESCRIPTION**

The Vaportite LED Series is an energy efficient Industrial Vaportite fixture that features rugged and durable construction. The Vaportite LED incorporates a full metal fixture liner inside a reinforced fiberglass housing with a high impact diffuser. This Vaportite series is suitable for interior and exterior applications and can be surface or chain mounted.

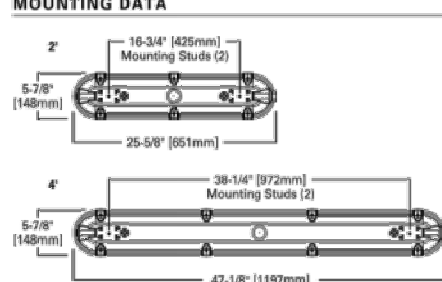
The Vaportite LED Series has been designed for maximum operation in commercial institutional and industrial environments and can operate in a wide range of temperatures (-40°C to 55°C) and is ideal for cold storage environments.

**SPECIFICATION FEATURES**

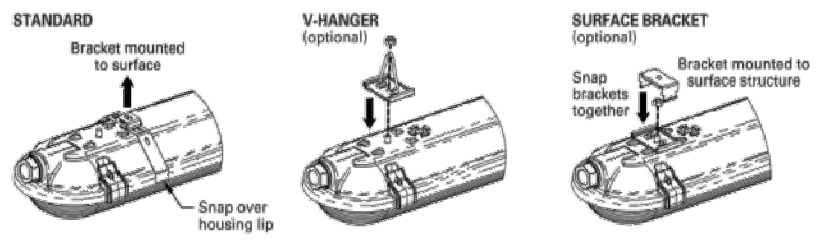
- Construction**  
Compression molded self-extinguishing fiberglass reinforced polyester compound with UL 5V flame rating (ASTM D637-N). Standard housings available with one 7/8" conduit entry point on both ends. Polyurethane gasketing is formed in the housing providing a continuous seamless seal for the diffuser. Durable cam latches clamp diffuser tightly for a positive seal between housing, gasketing and diffuser. Electrical components and fixtures are UL cUL listed for Wet Locations. -40°C to 55°C ambient ratings.
- Electrical**  
Long-life LED system coupled with electrical driver to deliver optimal performance. LED's available in 3500, 4000 and 5000K with a CRI ≥ 80. Projected life is 60,000 hours at 91% lumen output. cULus listed. Electronic drivers are available for 120-277V applications. A 0-10V dimming control is available (standard).
- Lens**  
Thermoformed low profile, high impact 50% DR acrylic lens. General distribution offered with smooth frosted lens. Wide distribution offered with frosted prismatic lens. Parking garage distribution offered in clear prismatic lens.
- Warranty**  
Vaportite LED features a five year limited warranty.
- Compliance**  
ULcUL listed for Wet location, RASH compliant, and LED modules comply with IESNA LM-79 and LM-80 standards. NEMA 4X, IP65, IP66 and IP67 rated (see installation instructions for requirements). NSF International certified for NSF/ANSI Standard 2 – Food Equipment



**MOUNTING DATA**



**INSTALLATION DATA**



**ENERGY DATA**

Input Watt: 4x72,254 (4,000 lumens)@12V  
4x73,126 (4,000 lumens)@40V  
4x73,126 (4,000 lumens)@60V

LINEAR DISCONNECT  
Safe and convenient means of disconnecting power

PS070320EN  
February 9, 2018 7:45 AM





CABANA ON POWER #PRS19-00076  
GREENLIGHT COMMUNITIES

STREETSCAPE ELEVATIONS (COLOR)

# DR-A3.1

**WORKSBUREAU**  
2524 NORTH 24TH STREET  
PHOENIX ARIZONA 85008 USA  
+1 602 324 6000

**Digital**  
600 N. 4TH STREET  
PHOENIX, ARIZONA 85004  
P 602.595.4101 | DIGSTUDIO.COM

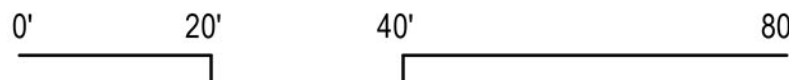
05/28/19

DRAWN BY:JD  
CHECKED BY:RG

18136  
DESIGN REVIEW

# DR-A3.1

SCALE: 1" = 20'

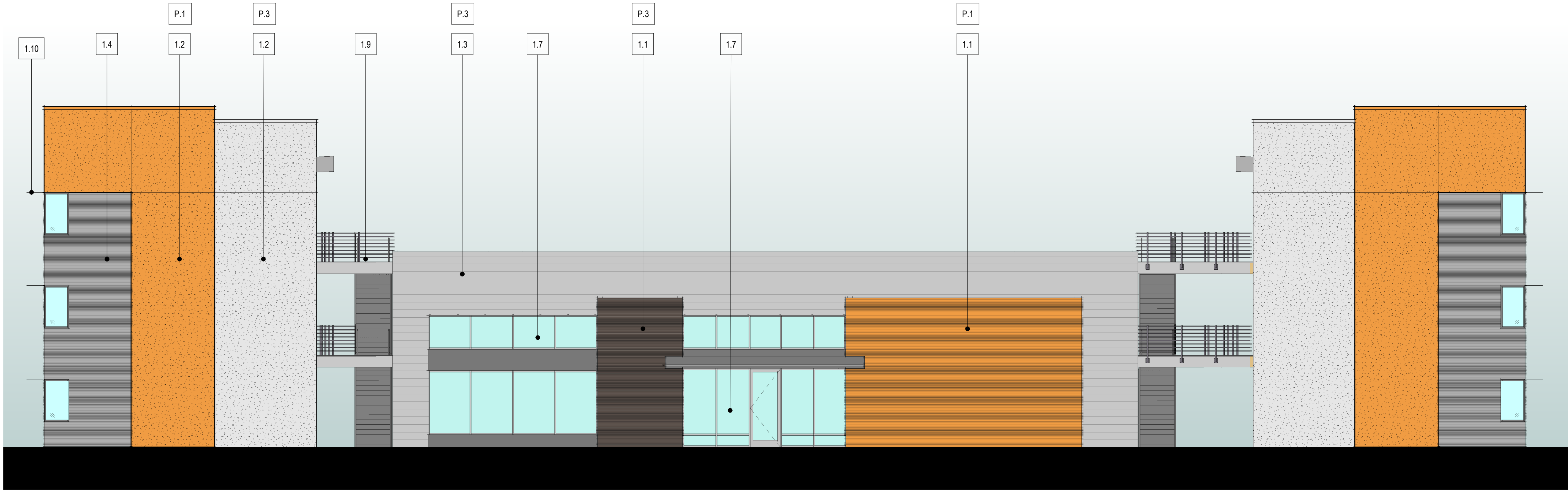




MATERIAL | PAINT LEGEND

- 1.1 STUCCO, HORIZ, RAKE  
1.2 STUCCO, STIPPLED FINISH WITH REVEALS AS SHOWN  
1.3 HORIZONTAL SIDING: ALLURA LAP SIDING, 10 3/4" EXPOSURE  
1.4 HORIZONTAL SIDING: ALLURA LAP SIDING, PATTERNED, 4" EXPOSURE  
1.5 METAL ENTRY CANOPY TRELLIS: PAINTED  
1.6 SCREENED CASEMENT WINDOW  
1.7 STOREFRONT WINDOW SYSTEM: CLEAR ANODIZED ALUMINUM FRAME  
1.8 FIXED WINDOW  
1.9 METAL RAILINGS & STRINGERS: PAINTED  
1.10 METAL HORIZONTAL SHADE BROW: PAINTED

- P-1 CORNOCOPIA (ORANGE)  
P-2 NUT SHELL (GRAY)  
P-3 DRIFT OF MIST (WHITE)  
P-5 BARK (SIDING COLOR)



- RO. PRPT 1  
36' - 9 7/8"
- BOTTOM OF TRUSS  
30' - 11 7/8"
- LEVEL 3  
21' - 9 1/4"
- LEVEL 2  
10' - 9 7/8"
- LEVEL 1  
0' - 0"

2 SOUTH STREETScape ELEVATION ENLARGED  
DR-A3.3 1/8" = 1'-0"



- RO. PRPT 1  
36' - 9 7/8"
- BOTTOM OF TRUSS  
30' - 11 7/8"
- LEVEL 3  
21' - 9 1/4"
- LEVEL 2  
10' - 9 7/8"
- LEVEL 1  
0' - 0"

POWER RD. (WEST) STREETScape ELEVATION  
ENLARGED

1  
DR-A3.3 1/8" = 1'-0"

05/28/19

DRAWN BY:JD CHECKED BY:RG

18136  
DESIGN REVIEW

DR-A3.3

CABANA ON POWER #PRS19-00076

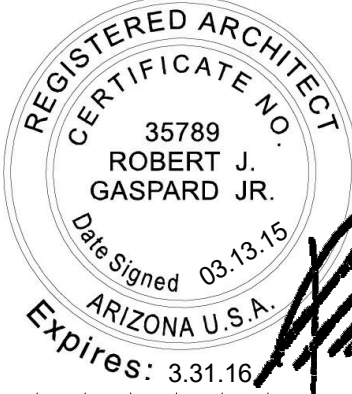
GREENLIGHT COMMUNITIES

ENLARGED ELEVATIONS (COLOR)

As indicated

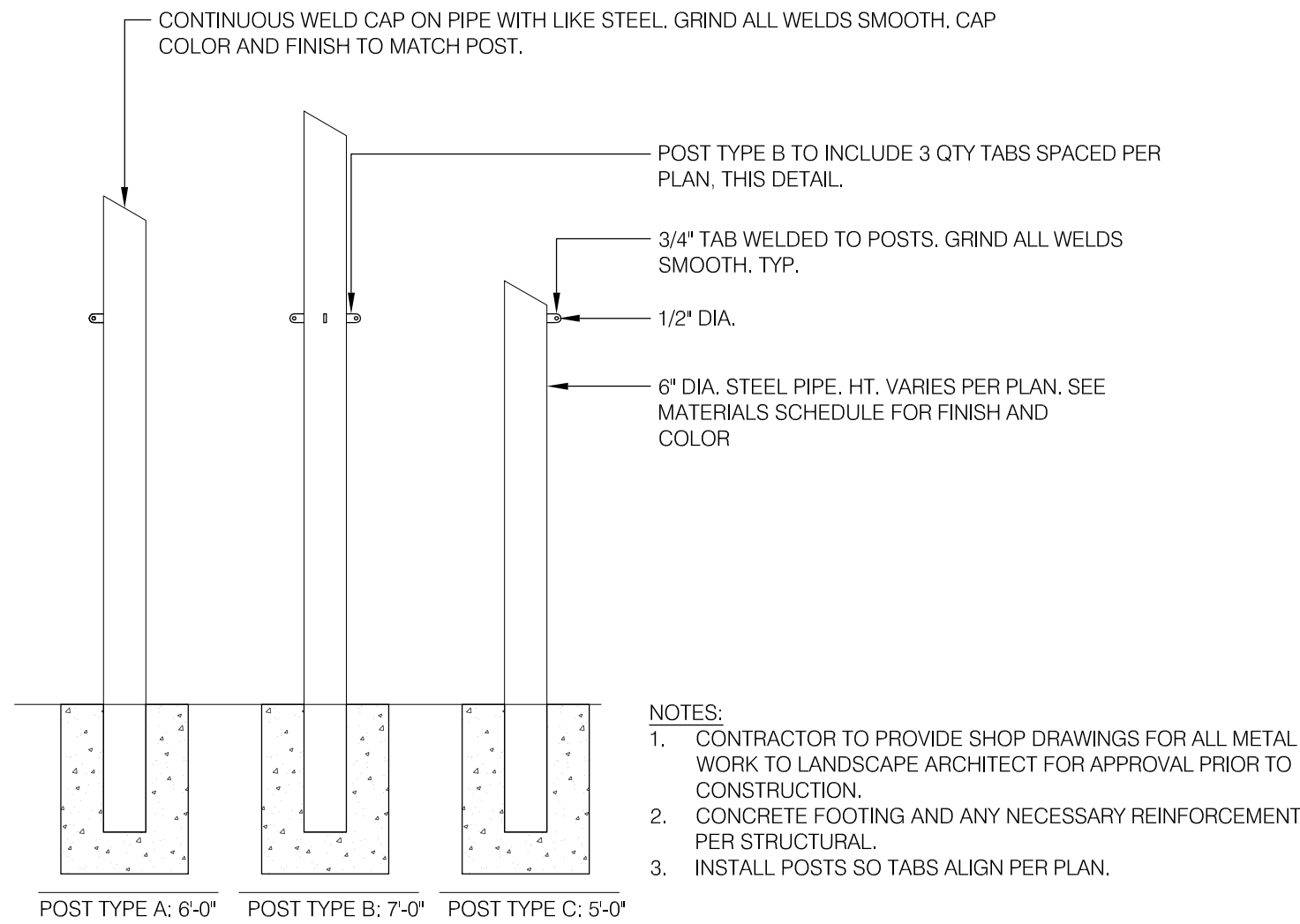
SHEET SCALE

WORKSBUREAU  
2524 NORTH 24TH STREET  
PHOENIX, ARIZONA 85008 USA  
+1 602 324 6000

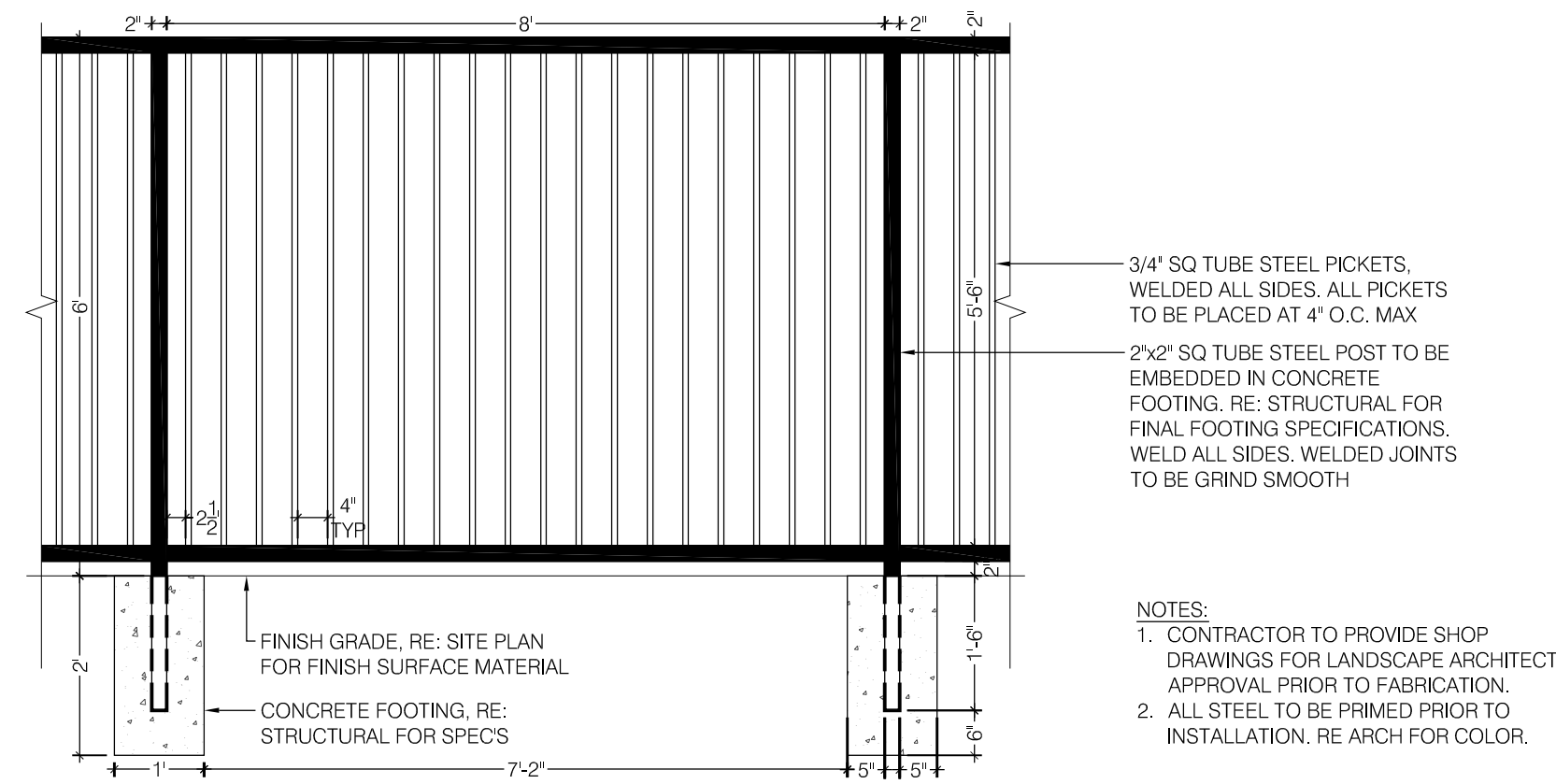


Dig Studio  
800 N. 4TH STREET  
PHOENIX, ARIZONA 85004  
P 602.595.4101 | DIGSTUDIO.COM

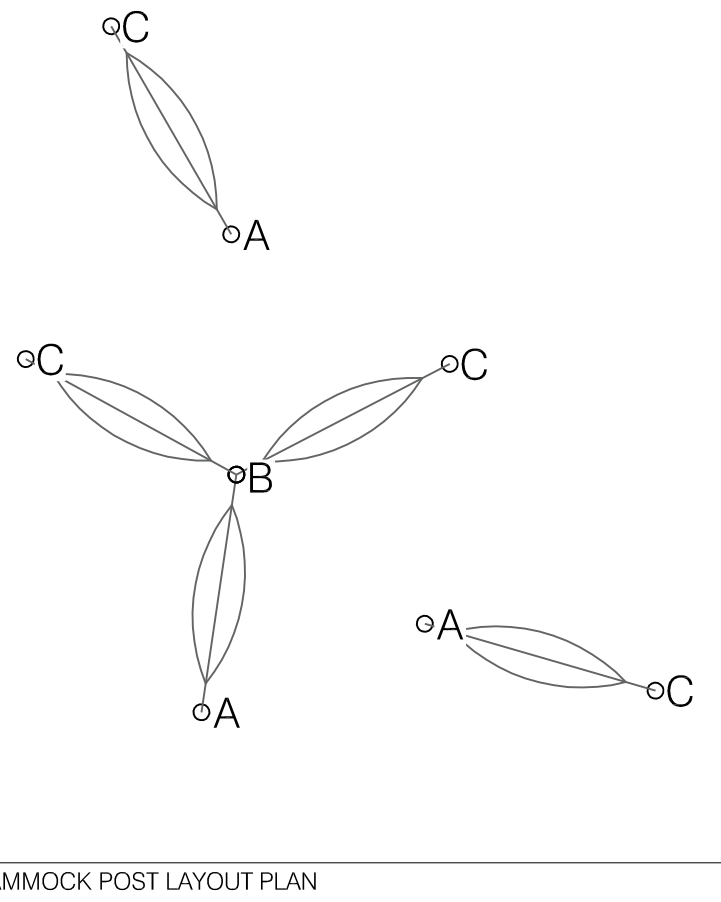




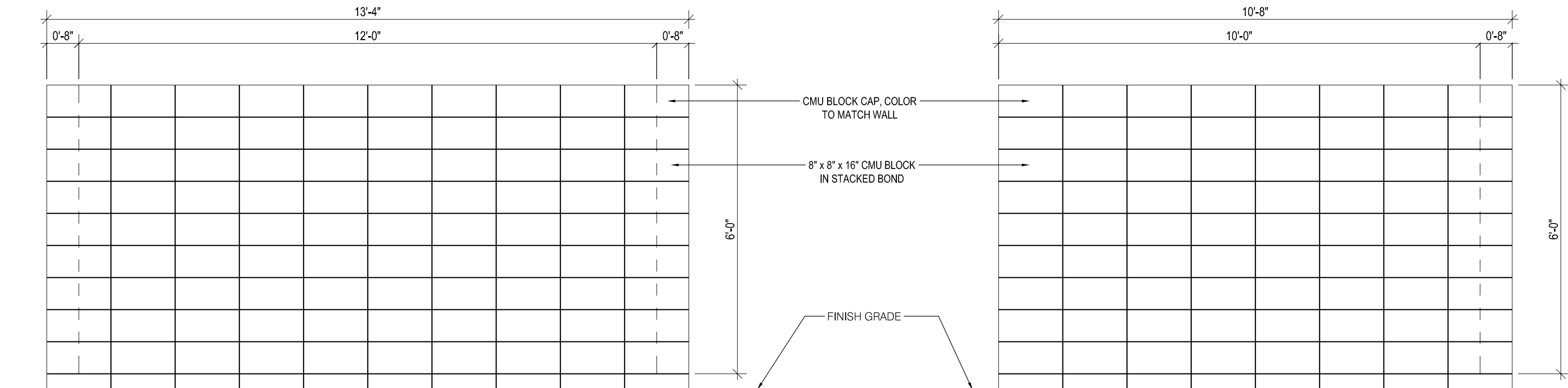
5 HAMMOCK POSTS DETAIL  
1/2" = 1'-0"



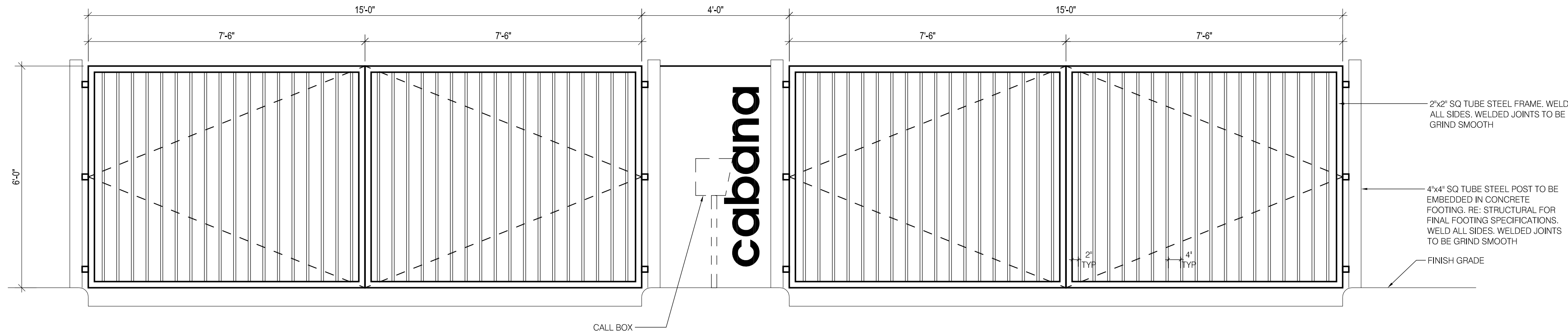
2 PERIMETER FENCE ELEVATION DETAIL  
1/2" = 1'-0"



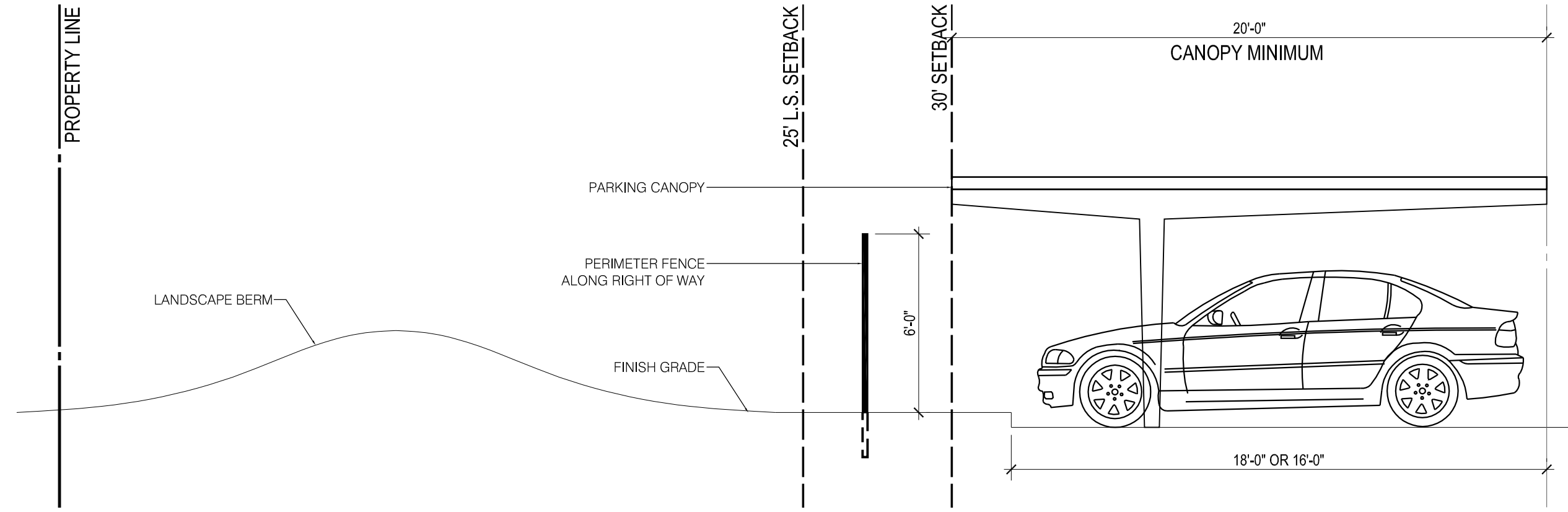
HAMMOCK POST LAYOUT PLAN



4 REFUSE BACK ELEVATION DETAIL  
1/2" = 1'-0"

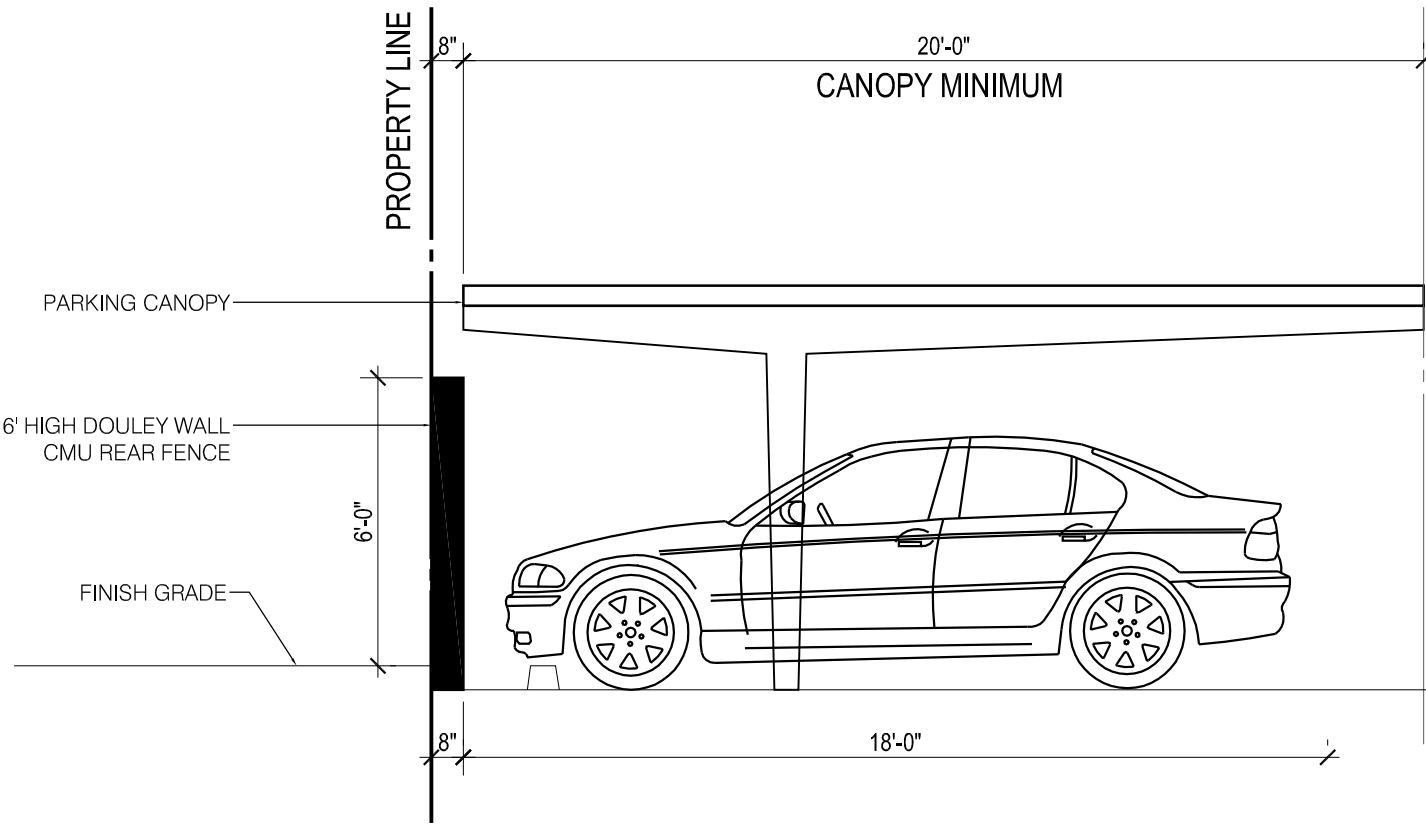


1 ENTRY GATE ELEVATION DETAIL  
1/2" = 1'-0"



6 CANOPY SECTION @ LANDSCAPE BERM  
1/2" = 1'-0"

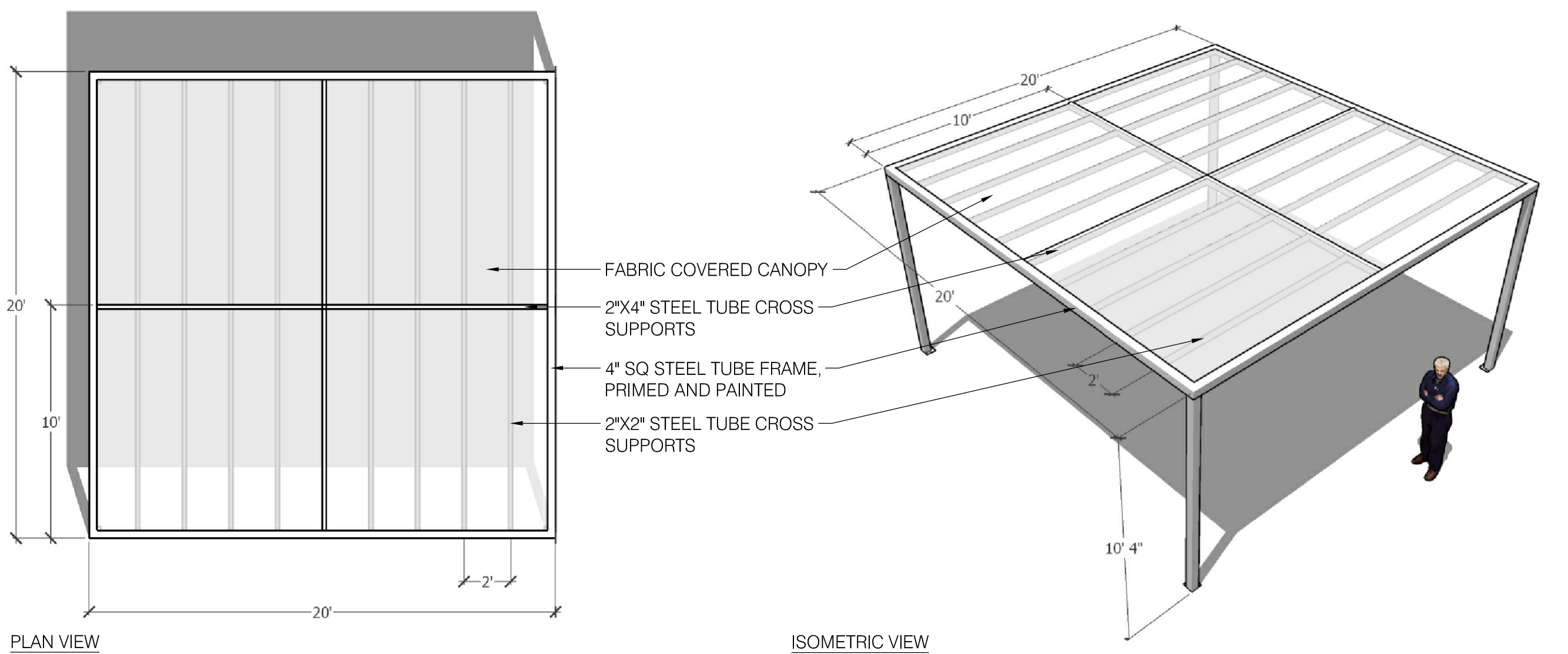
7 CANOPY SECTION @ REAR YARD FENCE  
1/2" = 1'-0"



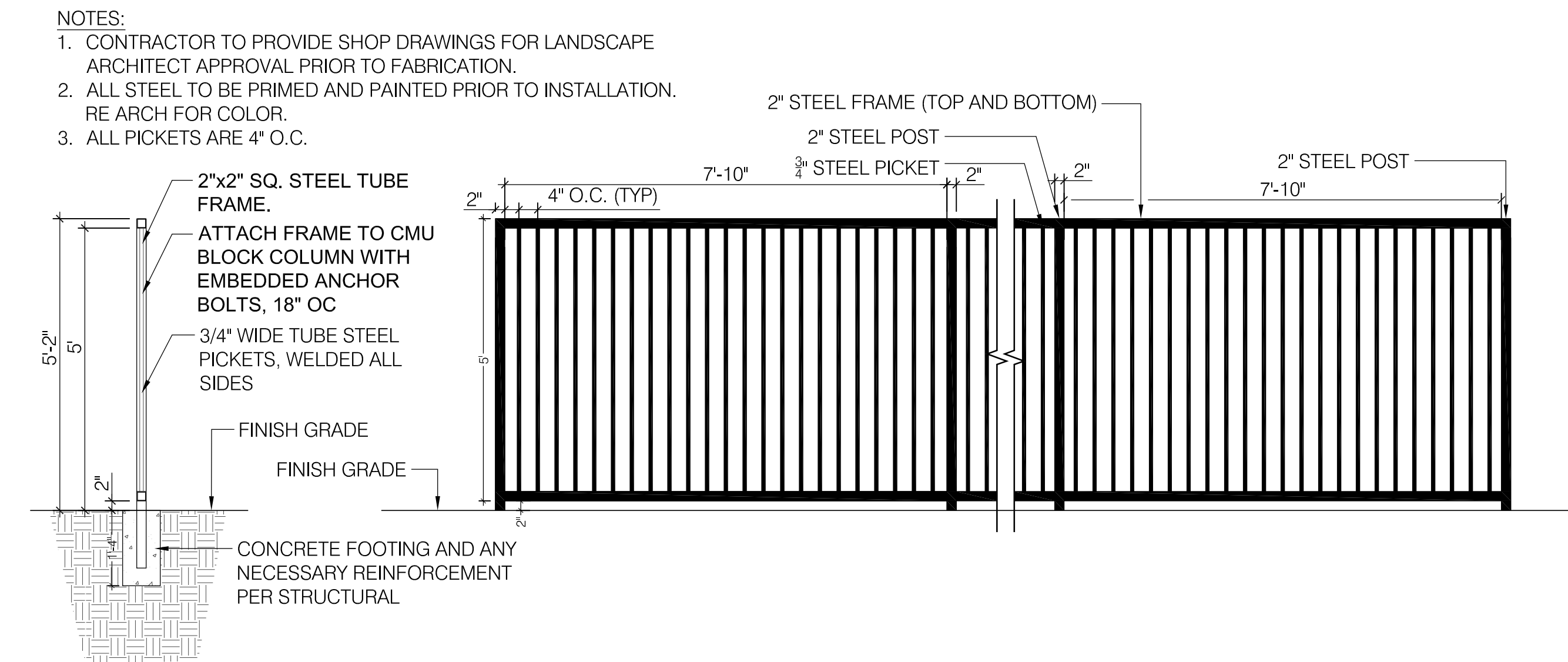
3 REFUSE SIDE ELEVATION DETAIL  
1/2" = 1'-0"

REVISIONS		NO.	DATE	DESCRIPTION
		1		
		2		
		3		
		4		
		5		

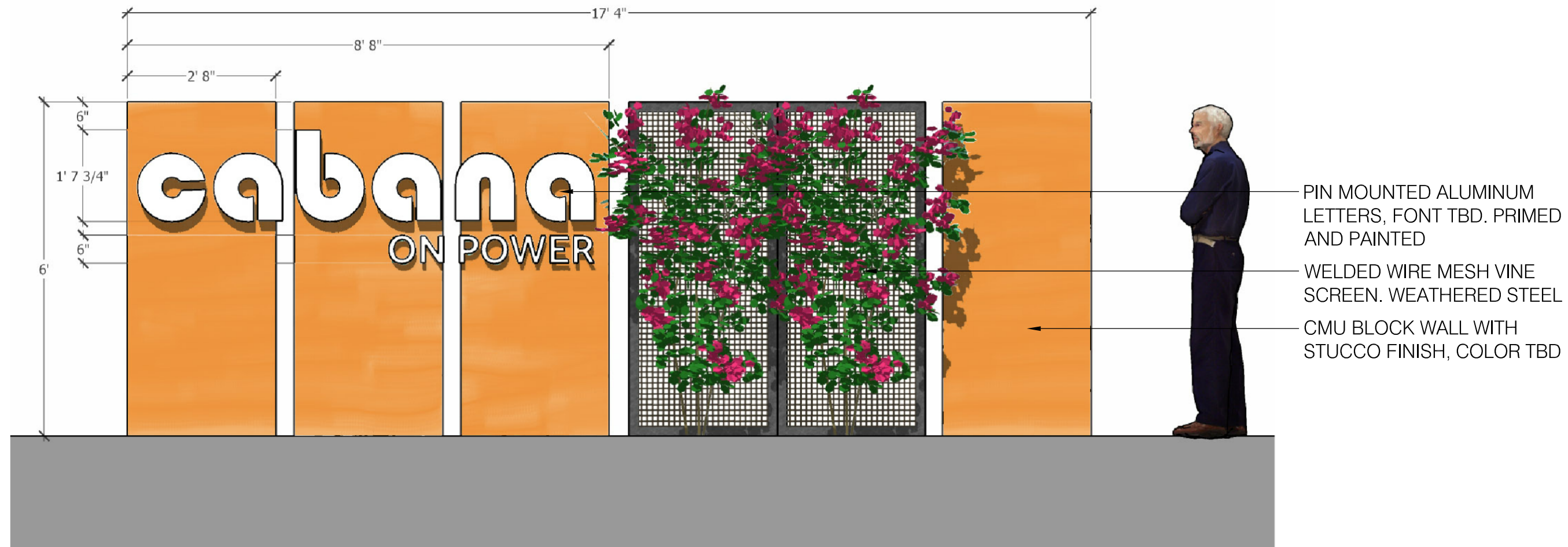




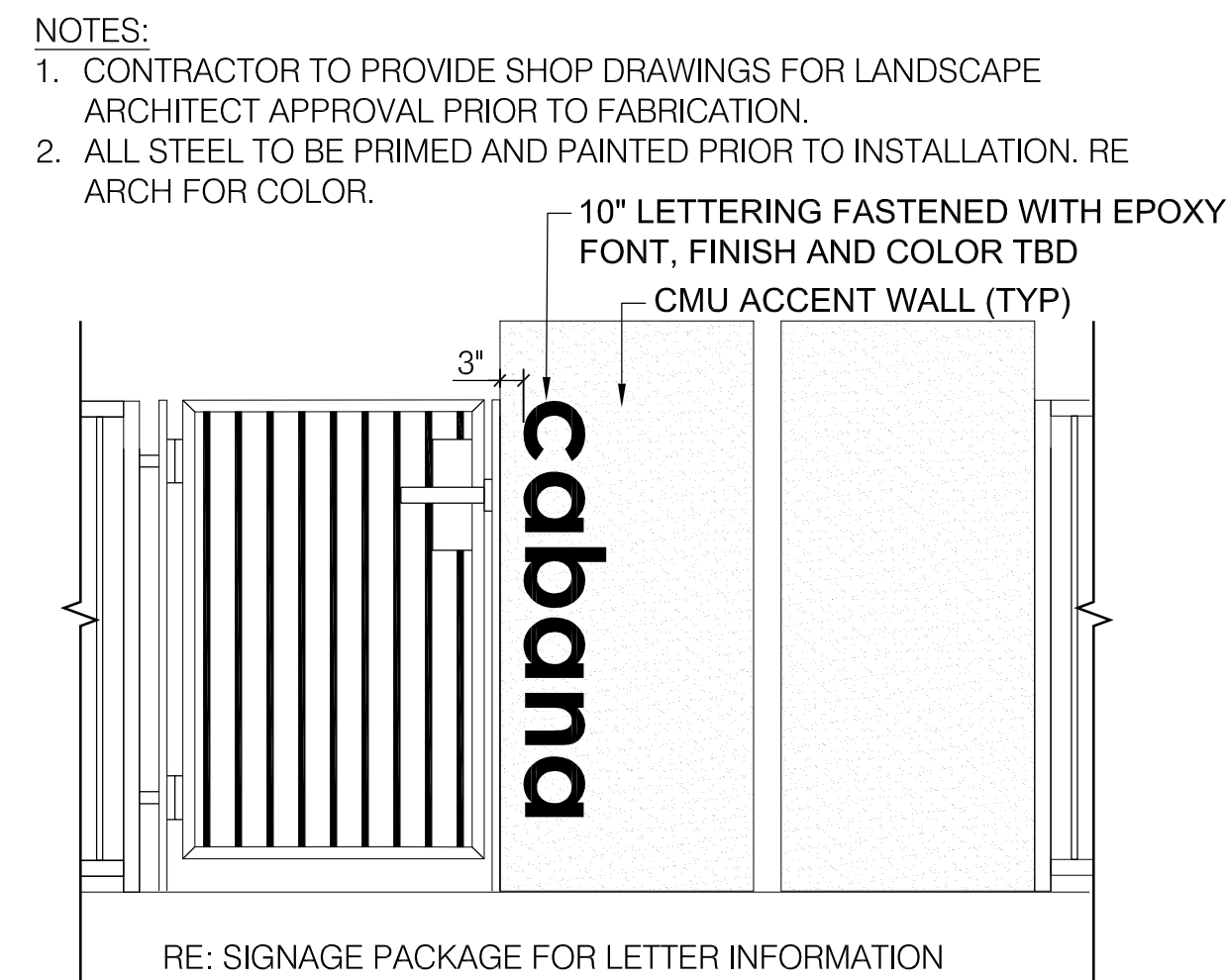
6 SHADE STRUCTURE  
1/2" = 1'-0"



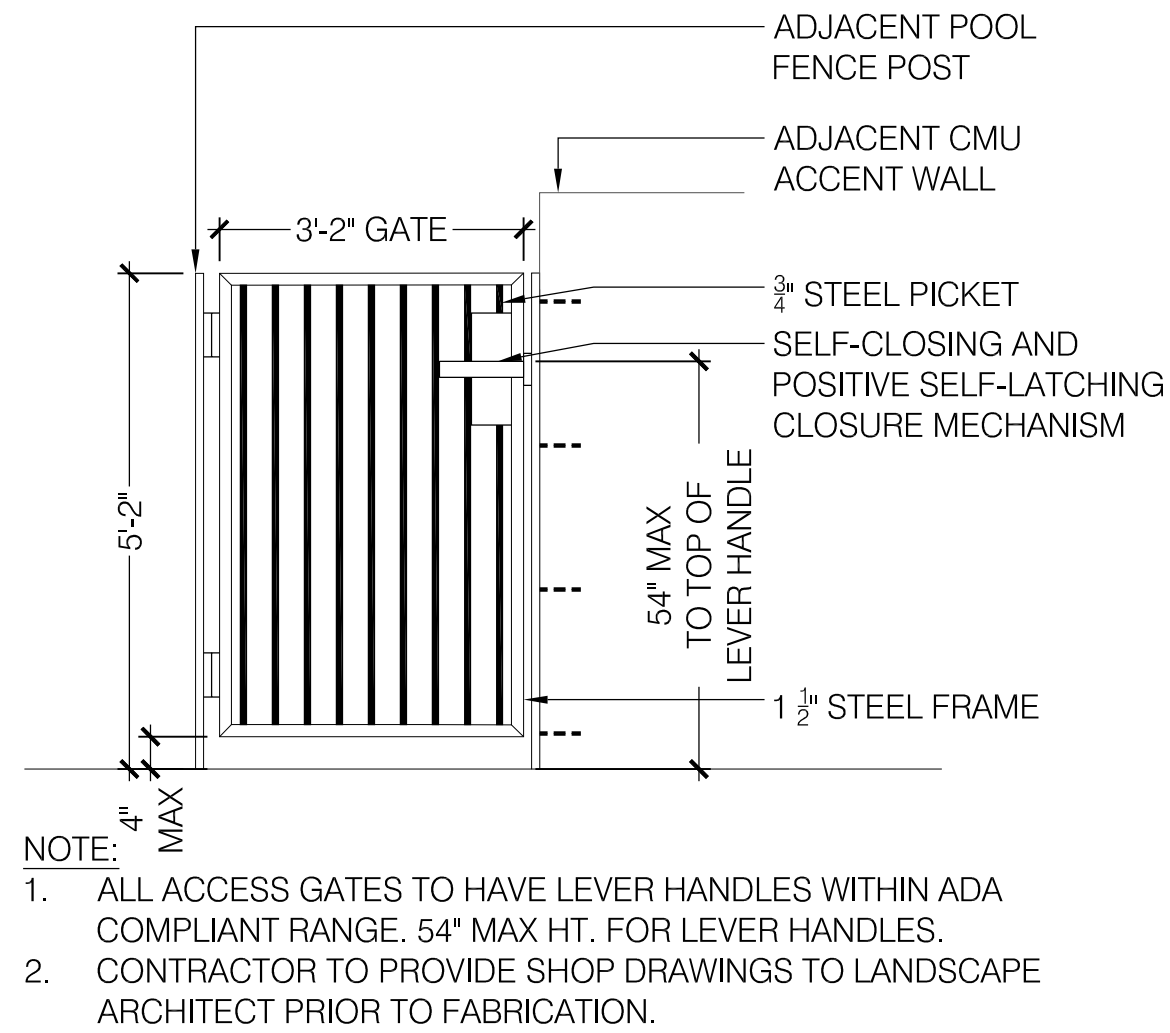
3 POOL FENCE  
1/2" = 1'-0"



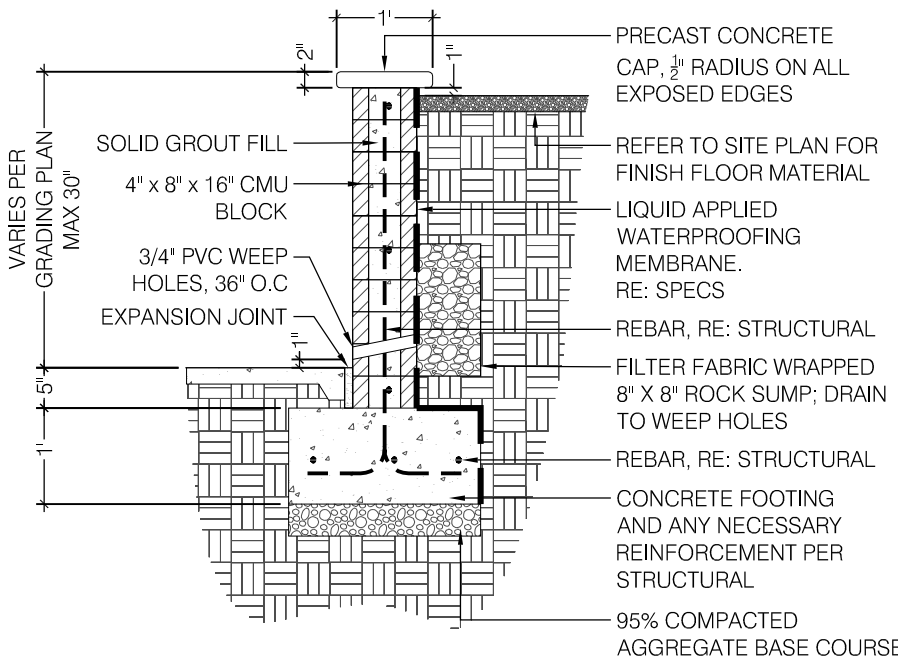
7 ENTRY SIGNAGE  
1/2" = 1'-0"



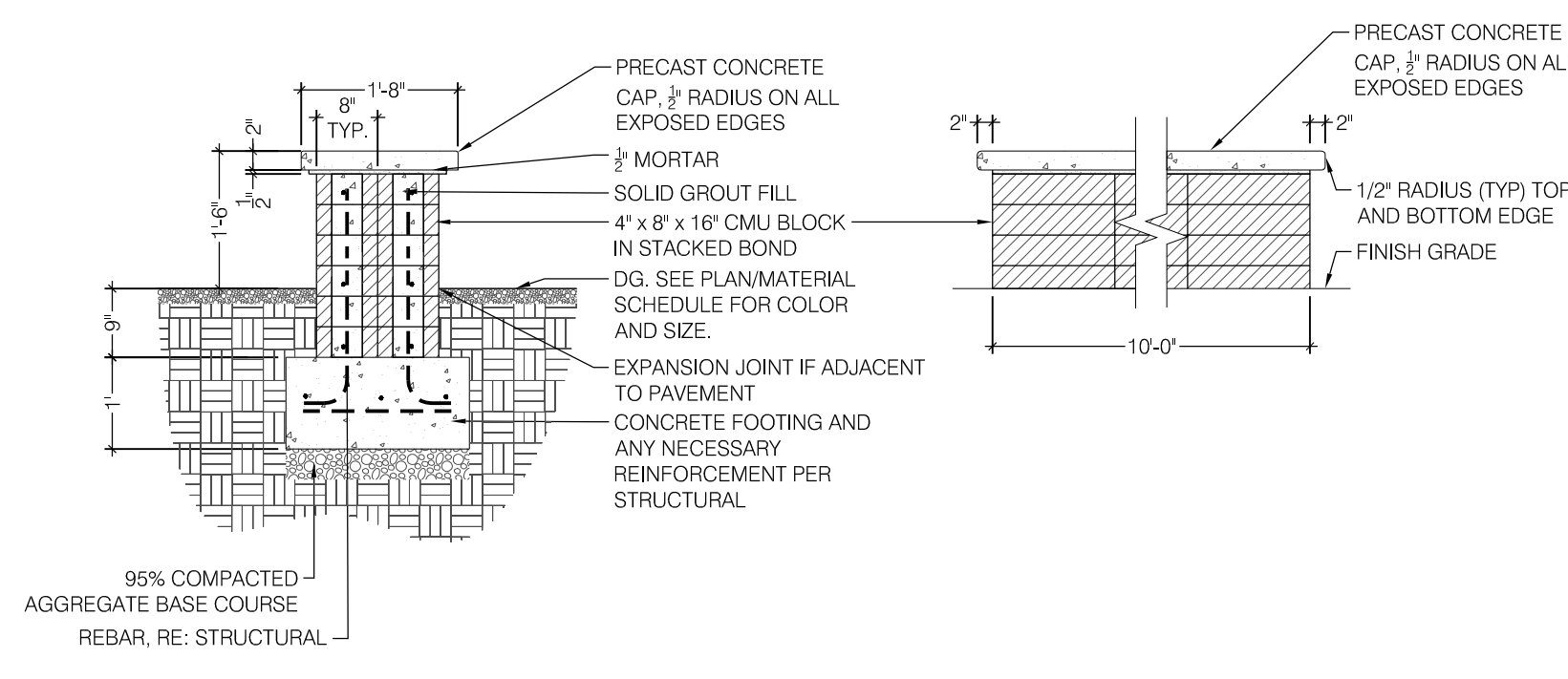
5 SITE WALL POOL ENTRY TYPE 1  
1/2" = 1'-0"



4 POOL GATE  
1/2" = 1'-0"



2 CMU RETAINING WALL  
1/2" = 1'-0"



1 CMU BLOCK SEAT WALL  
1/2" = 1'-0"

REVISONS	DESCRIPTION	
	NO.	DATE
	-	-
	-	-
	-	-
	-	-
	-	-





05/28/19

DRAWN BY:JD

CHECKED BY:RG

18136

DESIGN REVIEW

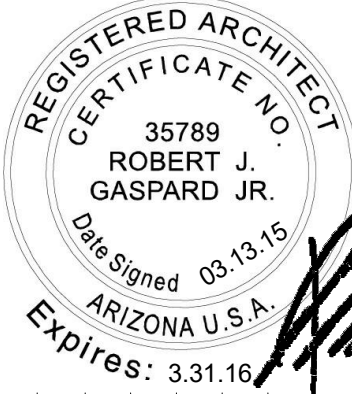
DR-A5.1

CABANA ON POWER #PRS19-00076  
GREENLIGHT COMMUNITIES

RENDERINGS

SHEET SCALE

NO.	DATE	REVISIONS	
		DESCRIPTION	



WORKSBUREAU  
2524 NORTH 24TH STREET  
PHOENIX ARIZONA 85008 USA  
+1 602 324 6000

Dig  
Studio

800 N. 4TH STREET  
PHOENIX, ARIZONA 85004  
P 602.998.4101 | DIGSTUDIO.COM